

RELIABLE POWER SOURCE SERIES



Series:

► LPC series

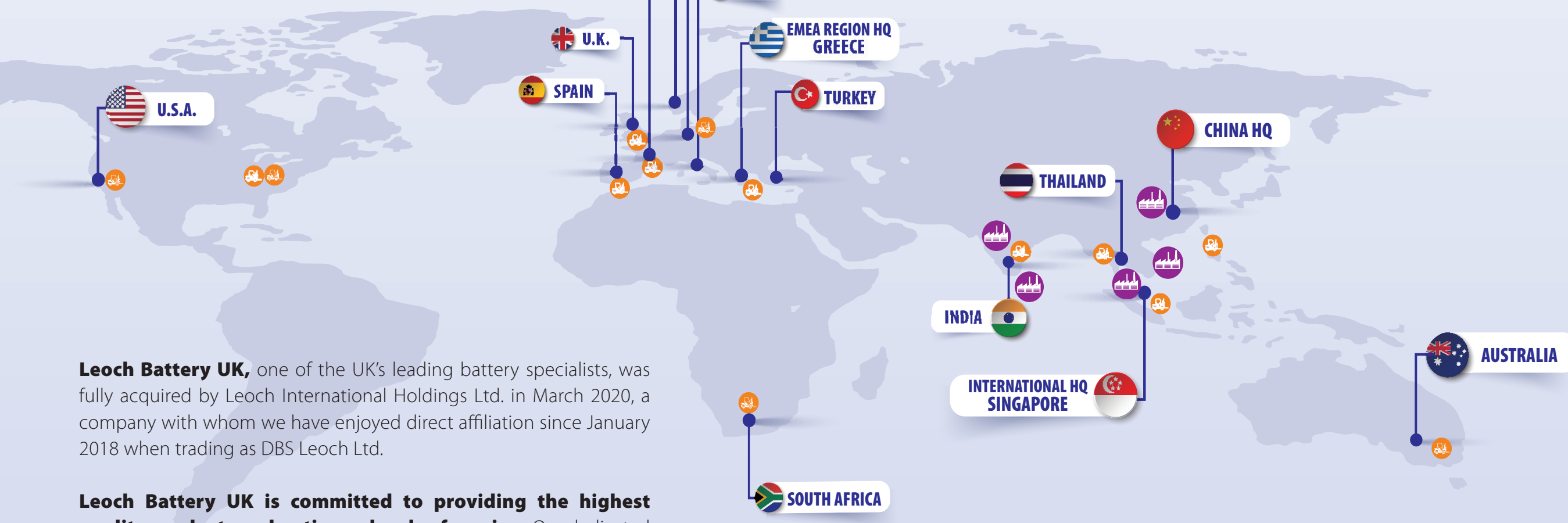
► LDCL series

► LDC series

► Lithium 12V



www.leoch.eu



- Manufacturing Plants (10)**
- China Zhaoqing
 - China Jiangsu
 - China Anhui (3)
 - Sri Lanka
 - Malaysia (2)
 - India
 - Vietnam

- Subsidiaries / Sales Offices**
- EMEA region (10)**
- Athens, Greece
 - Leicestershire, UK
 - Paris, France
 - Paderborn, Germany
 - Milan, Italy
 - Madrid, Spain
 - Ankara, Turkey
 - Johannesburg, S. Africa
 - Stockholm, Sweden
 - Budapest, Hungary

- APAC region (5)**
- Shenzhen, China
 - Singapore
 - Bangalore, India
 - Sydney, Australia
 - Bangkok, Thailand

Subsidiaries / Sales Offices **Manufacturing Plants** **Warehouses** **Los Angeles, USA**

Leoch Battery UK, one of the UK's leading battery specialists, was fully acquired by Leoch International Holdings Ltd. in March 2020, a company with whom we have enjoyed direct affiliation since January 2018 when trading as DBS Leoch Ltd.

Leoch Battery UK is committed to providing the highest quality products and optimum levels of service. Our dedicated experts are here to listen to your business needs and carefully formulate honest power solutions that consistently deliver excellent results. We supply throughout the distribution chain, to OEM customers directly; to general battery distributors and market-specific providers, plus end-user customers via our retail offering Battery Store.

Your Global Battery Partner....

| | | | | | | |
|-----------------------|--|----------------------|------------------|---------------------|-----------------------------------|--------------------|
| | | | | | | |
| 1999 | 14 | 10 | 105 | 12.000 | 20 | 1.5b |
| Company Establishment | Subsidiaries and Sales Offices Worldwide | Manufacturing Plants | Production Lines | Employees Worldwide | GVAH Production Capacity per Year | US \$ Annual Sales |

...providing a comprehensive range of maintenance-free mobility batteries

It is hard to find a more critical application than mobility scooters and assisted living products where there is simply no alternative to supplying reliable power sources. Leoch mobility batteries are offered in a variety of technologies and capacities to ensure safety and peace of mind. Our technical know-how and manufacturing integrity are reassuring for both distributors and end-users regarding their batteries' longevity and quality.



Why choose us?



The Leoch Battery UK Team offers over 100 years' collective experience in the import, export, and distribution of batteries throughout the UK & Europe.



**Did you
KNOW?**



Central UK warehouse

Our centrally located headquarters and warehouse in Market Harborough, Leicestershire, in the heart of the East Midlands, allow us to distribute our extensive range of batteries with ease and speed across the entirety of the country.



Quality assured products

Partnering directly with Leoch, one of the largest battery producers in the world, means we know where our products have been manufactured. Continuity of supply is assured: a rarity in the industry.



UN 38.3 Accreditation

Leoch Lithium 12 and 24V Lithium batteries boast Section 38.3 accreditation from the UN Manual of Tests and Criteria (UN Transportation Testing). This means they are safe to be transported by air, sea, rail and road and throughout the battery's transportation process right through to the end user. The protocol includes identifying/classifying lithium batteries; testing/ qualification requirements; design guidance/conditions and packaging/shipping obligations



Own branding

Trade customers of Leoch Battery UK can take advantage of the technologies of one of the largest battery manufacturers in the world and develop their own private labelling. An increasingly popular practice, own-branding can lower your costs and increase your profit margins. Both paper and screenprint labelling are possible and we welcome all enquiries.



CE Marking

Leoch Battery's 12 and 24V Lithium batteries are CE accredited, signifying that they conform with health, safety and environmental protection standards for products sold within the European Economic area. The batteries are assembled according to tests including IEC-61000-6-1 and 61000-6-3 which relate to the Electromagnetic Compatibility (EMC) Directive 2014/30/EU.



National sales team

We have a dedicated sales team of highly experienced battery professionals out on the road, who are backed up by operations and sales experts in-house. Whether on the end of a phone or making a visit to you in person, our representatives are always on hand to provide expert advice on any technical, sales or after-sales service matters.



National warranty coverage

For your convenience, Leoch Battery UK's warranty coverage (Link to warranty page) extends to all batteries distributed by the company, whether purchased directly from us or bought through one of our customers. Our batteries are supported by excellent manufacturer warranties of 12 months and tested by trained experts at our UK facility.



Our Website

www.leochbattery.co.uk

is the site to bookmark for up-to-date Company information and the latest product news. Blogs, downloads and product advice can all be found here, as well as details of the latest exhibitions we're attending.

Please note that all products and specifications are subject to change © Leoch Battery 2020.



Our team of dedicated Account Managers and office staff would be delighted to advise on further product information, technical data and suitability, regardless of the application.



Contact us via phone on **01858 433 330**
or email on **sales.uk@leoch.com**





LPC series

600 cycles

NUMBER OF CYCLES AT 50% DOD

Up to 6 months at 25°C

SHELF LIFE

1~2 years

WARRANTY

5.6 - 200 AH

RATED CAPACITY



The mobility sector demands reliability when it comes to its battery needs and the Leoch AGM LPC series is a great option for any mobility scooter. Available in most popular sizes to accommodate any make or model of mobility scooter.

GENERAL FEATURES



DEEP CYCLE

Designed and optimized for cyclic intensive applications LPM series offer high resilience for deep discharge recovery.



ABS CASE

ABS case UL94-HB (UL94-V0 Optional) is used for increased container strength.



SAFETY

Unique anti-explosion one-way vent valve design to minimize water loss and increase safety.



ECO FRIENDLY

Environmentally friendly, no toxic materials.



LONG LIFE

Thick plates using a special pasting formula ensures long service life.



MAINTENANCE FREE

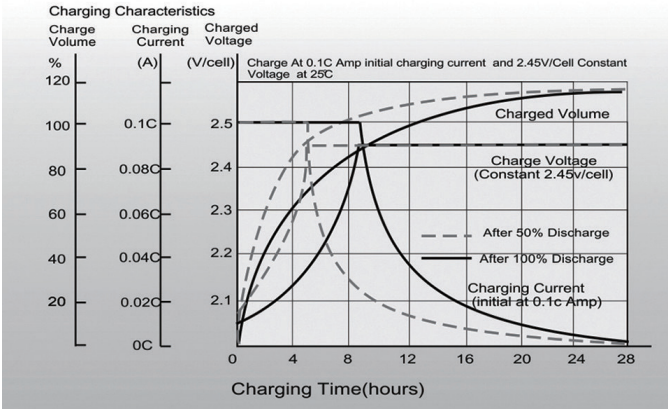
Sealed and safe, maintenance-free design.

BATTERY SPECIFICATIONS

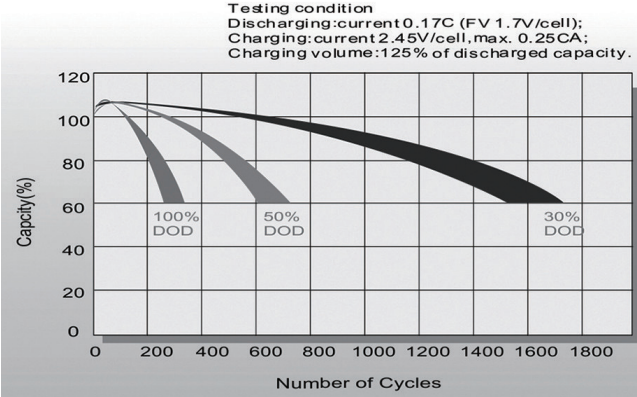
| Model | Nominal Voltage (V) | Rated Capacity 10Hr @ 1.80V/cell (AH) | Approx. Dimensions | | | | | | | | Approx. Weight | | Terminal Type |
|-----------|---------------------|---------------------------------------|--------------------|-------|-------|------|--------|------|--------------|------|----------------|--------|---------------|
| | | | Length | | Width | | Height | | Total Height | | | | |
| | | | mm | in. | mm | in. | mm | in. | mm | in. | kg | lbs | |
| LPC6-5.6 | 6 | 5.6 | 70.00 | 2.76 | 47 | 1.85 | 100.00 | 3.94 | 106.00 | 4.17 | 0.90 | 1.98 | T2 |
| LPC6-13 | 6 | 13 | 151.00 | 5.94 | 51 | 2.01 | 94.00 | 3.70 | 100.00 | 3.94 | 2.05 | 4.52 | T2 |
| LPC12-3.5 | 12 | 3.2 | 134.00 | 5.28 | 67 | 2.64 | 60.50 | 2.38 | 66.50 | 2.62 | 1.35 | 2.98 | T1 |
| LPC12-5.6 | 12 | 5 | 90.00 | 3.54 | 70 | 2.76 | 101.00 | 3.98 | 107.00 | 4.21 | 1.83 | 4.04 | T1 |
| LPC12-7.2 | 12 | 7.2 | 151.00 | 5.94 | 65 | 2.56 | 93.50 | 3.68 | 99.50 | 3.92 | 2.50 | 5.51 | T2 |
| LPC12-8.0 | 12 | 8 | 151.00 | 5.94 | 65 | 2.56 | 93.50 | 3.68 | 99.50 | 3.92 | 2.47 | 5.45 | T2 |
| LPC12-13 | 12 | 13 | 151.00 | 5.94 | 98 | 3.86 | 95.00 | 3.74 | 101.00 | 3.98 | 4.05 | 8.93 | T2 |
| LPC12-18 | 12 | 18 | 181.50 | 7.15 | 76.5 | 3.01 | 167.50 | 6.59 | 167.50 | 6.59 | 6.00 | 13.20 | T3 |
| LPC12-24 | 12 | 24 | 166.00 | 6.54 | 175 | 6.89 | 126.00 | 4.96 | 126.00 | 4.96 | 8.57 | 18.90 | M5 |
| LPC12-24H | 12 | 24 | 164.00 | 6.46 | 125 | 4.92 | 176.00 | 6.93 | 176.00 | 6.93 | 9.10 | 20.10 | T3-A |
| LPC12-26 | 12 | 26 | 166.00 | 6.54 | 175 | 6.89 | 125.00 | 4.92 | 125.00 | 4.92 | 9.35 | 20.60 | T3 |
| LPC12-33 | 12 | 33 | 195.00 | 7.68 | 130 | 5.12 | 164.00 | 6.46 | 182.00 | 7.17 | 11.65 | 25.70 | T5 |
| LPC12-38 | 12 | 38 | 197.00 | 7.76 | 165 | 6.50 | 170.00 | 6.69 | 170.00 | 6.69 | 14.20 | 31.30 | M6 |
| LPC12-50 | 12 | 50 | 257.00 | 10.12 | 132 | 5.20 | 200.00 | 7.87 | 200.00 | 7.87 | 17.60 | 38.80 | M6 |
| LPC12-55 | 12 | 55 | 229.00 | 9.02 | 138 | 5.43 | 210.00 | 8.27 | 230.00 | 9.06 | 17.70 | 39.00 | T9 |
| LPC12-75 | 12 | 75 | 260.00 | 10.24 | 168 | 6.61 | 208.00 | 8.19 | 214.00 | 8.43 | 22.30 | 49.20 | M6 |
| LPC12-100 | 12 | 100 | 330.00 | 12.99 | 173 | 6.81 | 212.00 | 8.35 | 220.00 | 8.66 | 30.60 | 67.50 | M8 |
| LPC12-120 | 12 | 120 | 408.00 | 16.06 | 177 | 6.97 | 225.00 | 8.86 | 225.00 | 8.86 | 37.30 | 82.20 | M8 |
| LPC12-150 | 12 | 150 | 483.00 | 19.02 | 170 | 6.69 | 238.50 | 9.39 | 238.50 | 9.39 | 43.20 | 95.30 | M8 |
| LPC12-200 | 12 | 200 | 522.00 | 20.55 | 240 | 9.45 | 218.00 | 8.58 | 224.00 | 8.82 | 62.20 | 137.20 | M8 |

PERFORMANCE CHARACTERISTICS

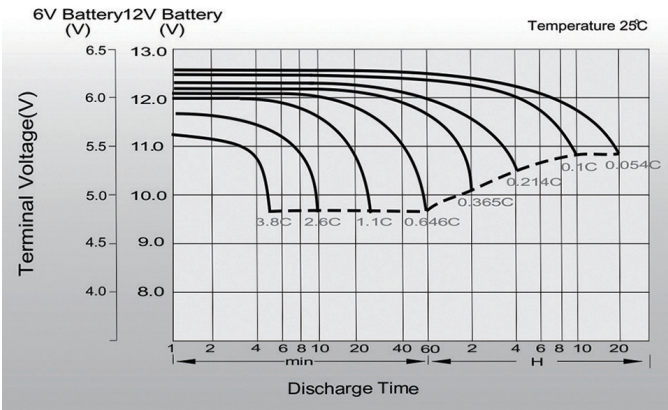
Charging Characteristics (cycle use)



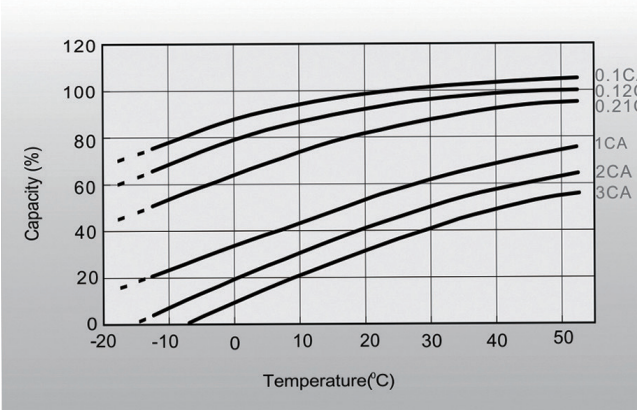
Cycle Life in Relation to Depth of Discharge



Discharge Characteristics



Temperature Effects in Relation to Battery Capacity





LDC series

1000 cycles

NUMBER OF CYCLES AT 60% DOD

Up to 6 months at 25°C

SHELF LIFE

up to 2 years

WARRANTY

85-375 AH

RATED CAPACITY



The best AGM deep cycle battery on the market! The Leoch LDC range offers superior performance with AGM technology, providing a long-life and super-fast power solution for a multitude of applications in industrial and lifestyle markets. A unique mixture of carbon and other key additives found in negative material allow the LDC range to perform in Partial State of Charge, which offers numerous advantages such as excellent cycling performance and reduced sulphation, a key reason for premature failure.

GENERAL FEATURES



HIGH PERFORMANCE

Special mixture of carbon and other proprietary additives in negative active material (NAM) for high performance in partial state of charge (PSoC) applications.



SEPARATOR

One-of-a-Kind AGM Separator, designed and manufactured by Leoch itself, unlike any in the market, to lower internal resistance, maintain balanced cell compression and prevent acid stratification (one of the leading causes of failure in AGM batteries).



WIDE RANGE

Wide model range offering from 6V up to 12V blocks



ABS CASE

ABS case UL94-HB (UL94-V0 Optional) is used for increased container strength



SAFETY

Unique anti-explosion one-way vent valve design to minimize water loss and increase safety



DEPTH OF DISCHARGE

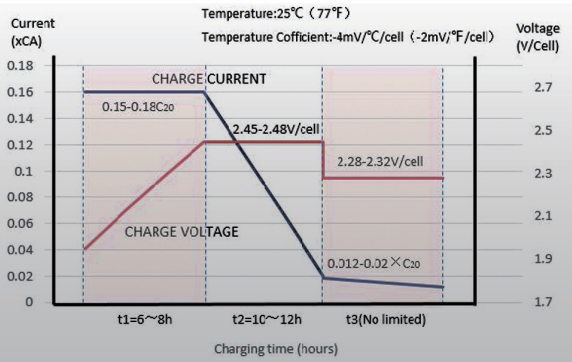
Low self-discharge at less than 3% per month at 77°F (25°C)

BATTERY SPECIFICATIONS

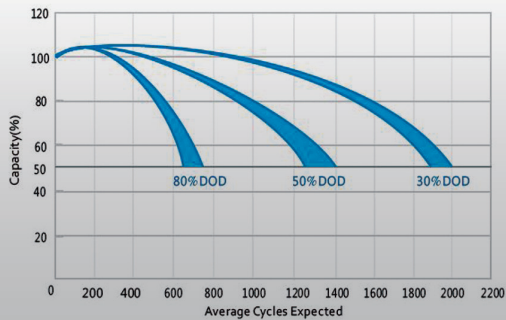
| Model | Nominal Voltage (V) | Rated Capacity (AH) | | Reserve Capacity (min) @25Amps | Approx. Dimensions | | | | | | | | Approx. Weight | | Terminal Type |
|------------------|---------------------|---------------------|-----|--------------------------------|--------------------|-------|--------|------|--------|-------|--------------|-------|----------------|--------|---------------|
| | | 10HR | 3HR | | Length | | Width | | Height | | Total Height | | kg | lbs | |
| LDC6-210-GC2 | 6 | 200 | 165 | 460 | 260.00 | 10.20 | 180.00 | 7.09 | 252.00 | 9.92 | 274.00 | 10.80 | 27.20 | 60.00 | MT |
| LDC6-224-GC2 | 6 | 210 | 173 | 490 | 260.00 | 10.20 | 180.00 | 7.09 | 247.00 | 9.72 | 253.00 | 10.00 | 30.50 | 67.30 | M8 |
| LDC6-245 | 6 | 232 | 196 | 530 | 243.00 | 9.57 | 187.50 | 7.38 | 275.00 | 10.80 | 275.00 | 10.80 | 32.40 | 71.40 | M8 |
| LDC6-265-GC2 | 6 | 240 | 200 | / | 260.00 | 10.20 | 180.00 | 7.09 | 263.00 | 10.40 | 268.00 | 10.60 | 32.90 | 72.50 | M8 |
| LDC6-275 | 6 | 260 | 225 | 625 | 295.00 | 11.60 | 180.00 | 7.09 | 274.00 | 10.80 | 296.00 | 11.70 | 36.50 | 80.50 | MT |
| LDC6-280 | 6 | 264 | 225 | / | 260.00 | 10.20 | 180.00 | 7.09 | 263.00 | 10.40 | 268.00 | 10.60 | 34.70 | 76.50 | M8 |
| LDC6-350 | 6 | 332 | 285 | 820 | 295.00 | 11.60 | 180.00 | 7.09 | 346.00 | 13.60 | 368.00 | 14.50 | 48.20 | 106.30 | MT |
| LDC6-400-L16 | 6 | 375 | 320 | 925 | 295.00 | 11.60 | 180.00 | 7.09 | 406.00 | 16.00 | 428.00 | 16.90 | 54.20 | 119.50 | MT |
| LDC8-165-GC8 | 8 | 155 | 125 | 325 | 260.00 | 10.20 | 180.00 | 7.09 | 252.00 | 9.92 | 274.00 | 10.80 | 29.30 | 64.50 | MT |
| LDC8-180-GC8 | 8 | 170 | 135 | 365 | 260.00 | 10.20 | 180.00 | 7.09 | 252.00 | 9.92 | 274.00 | 10.80 | 30.80 | 67.90 | MT |
| LDC8-195 | 8 | 178 | 150 | / | 262.00 | 10.30 | 180.00 | 7.09 | 278.50 | 11.00 | 278.50 | 11.00 | 34.50 | 76.10 | M8 |
| LDC8-210-GC8H | 8 | 190 | 165 | 480 | 260.00 | 10.20 | 182.00 | 7.17 | 295.00 | 11.60 | 298.00 | 11.70 | 40.50 | 89.30 | M8 |
| LDC8-230 | 8 | 214 | 180 | / | 262.00 | 10.30 | 180.00 | 7.09 | 278.50 | 11.00 | 278.50 | 11.00 | 37.20 | 82.00 | M8 |
| LDC12-90-G24-T | 12 | 85 | 72 | 175 | 260.00 | 10.20 | 168.00 | 6.61 | 208.00 | 8.19 | 214.00 | 8.43 | 23.50 | 51.80 | M8 |
| LDC12-90-G24-DT | 12 | 85 | 72 | 175 | 260.00 | 10.20 | 168.00 | 6.61 | 208.00 | 8.19 | 232.50 | 9.15 | 23.80 | 52.50 | MT |
| LDC12-105-G27-T | 12 | 104 | 90 | 220 | 306.00 | 12.00 | 168.00 | 6.61 | 208.00 | 8.19 | 214.00 | 8.43 | 27.30 | 60.20 | M8 |
| LDC12-105-G27-DT | 12 | 104 | 90 | 220 | 306.00 | 12.00 | 168.00 | 6.61 | 208.00 | 8.19 | 232.50 | 9.15 | 27.80 | 61.30 | MT |
| LDC12-112 | 12 | 104 | 90 | / | 305.00 | 12.00 | 168.00 | 6.61 | 207.00 | 8.15 | 213.00 | 8.39 | 29.50 | 65.00 | M6 |
| LDC12-112C | 12 | 104 | 90 | / | 305.00 | 12.00 | 168.00 | 6.61 | 207.00 | 8.15 | 213.00 | 8.39 | 29.50 | 65.00 | M8 |
| LDC12-115-G31-DT | 12 | 113 | 98 | 239 | 330.00 | 13.00 | 173.00 | 6.81 | 212.00 | 8.35 | 237.00 | 9.33 | 31.70 | 69.90 | MT |
| LDC12-115-G31-T | 12 | 113 | 98 | 239 | 330.00 | 13.00 | 173.00 | 6.81 | 212.00 | 8.35 | 220.00 | 8.66 | 31.40 | 69.20 | M8 |
| LDC12-120A | 12 | 114 | 100 | / | 330.00 | 13.00 | 173.00 | 6.81 | 213.00 | 8.39 | 220.00 | 8.66 | 35.00 | 77.20 | M8 |
| LDC12-120 | 12 | 114 | 100 | / | 330.00 | 13.00 | 173.00 | 6.81 | 213.00 | 8.39 | 220.00 | 8.66 | 32.80 | 72.30 | M8 |
| LDC12-140 | 12 | 138 | 120 | / | 408.00 | 16.10 | 176.00 | 6.93 | 224.50 | 8.84 | 224.50 | 8.84 | 39.20 | 86.40 | M8 |
| LDC12-145 | 12 | 141 | 118 | 308 | 340.00 | 13.40 | 172.00 | 6.77 | 280.00 | 11.00 | 286.00 | 11.30 | 42.50 | 93.60 | M8 |
| LDC12-150-GC12 | 12 | 143 | 125 | 323 | 327.00 | 12.90 | 180.00 | 7.09 | 274.00 | 10.80 | 274.00 | 10.80 | 42.20 | 93.00 | M8 |
| LDC12-180 | 12 | 174 | 150 | / | 483.00 | 19.00 | 170.00 | 6.69 | 238.50 | 9.39 | 238.50 | 9.39 | 50.10 | 110.50 | M8 |
| LDC12-220 | 12 | 210 | 170 | 470 | 387.00 | 15.20 | 180.00 | 7.09 | 346.00 | 13.60 | 368.00 | 14.50 | 59.70 | 131.70 | MT |
| LDC12-245 | 12 | 233 | 185 | 535 | 387.00 | 15.20 | 180.00 | 7.09 | 346.00 | 13.60 | 368.00 | 14.50 | 64.30 | 141.80 | MT |

PERFORMANCE CHARACTERISTICS

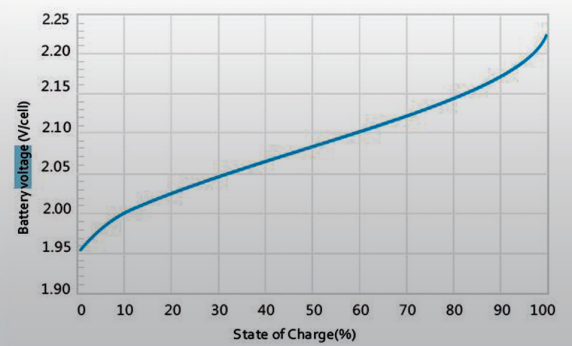
Discharge Characteristics



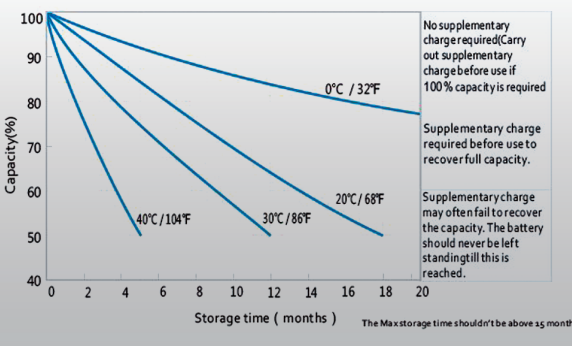
Cycle life in relation to Depth of Discharge



Relationship of OCV and State Of Charge (25°C, 77°F)



Self-discharge Characteristic





Lithium 12V

5000 cycles

NUMBER OF CYCLES AT 60% DOD

Up to 12 months at 25°C

SHELF LIFE

up to 3 years

WARRANTY

>10years (25°C)

DESIGN LIFE



Engineered to the highest quality standards, Leoch's new range of Lithium Iron Phosphate (LiFePO4) batteries offer extreme cyclic abilities compared to lead-acid batteries. Long life, no maintenance, lightweight and fast charging – all the attributes you'd expect from lithium and a long warranty included.

GENERAL FEATURES

ECO FRIENDLY

Environmentally friendly without any heavy metals inside.

CHARGE ENDURANCE

Fast charge capability of up to 1C10* offers unparalleled charging performance (*Model dependent).

WIDE RANGE

Light weighted, with high energy density make these batteries ideal for communications, mobility, medical and hybrid applications.

DEPTH OF DISCHARGE

Low self-discharge (≤2% per month)

LITHIUM TECHNOLOGY

Lithium-Ion Phosphate chemistry has a high thermal runaway threshold being the safest market lithium technology.

OPERATING TEMPERATURE RANGE

Wide temperature range operating from -20°C up to 60°C

BATTERY SPECIFICATIONS

| Model | Nominal Voltage (V) | Rated Capacity 10Hr @ 2.70V/cell (AH) | Approx. Dimensions | | | | | | | | Approx. Weight | |
|--------------|---------------------|---------------------------------------|--------------------|-------|--------|------|--------|------|--------------|------|----------------|-------|
| | | | Length | | Width | | Height | | Total Height | | | |
| | | | mm | in. | mm | in. | mm | in. | mm | in. | kg | lbs |
| LFeLi-1207M | 12.8 | 7 | 151.00 | 5.94 | 65.00 | 2.56 | 93.50 | 3.68 | 99.00 | 3.90 | 0.90 | 2.10 |
| LFeLi-1209M | 12.8 | 9 | 151.00 | 5.94 | 65.00 | 2.56 | 93.50 | 3.68 | 99.00 | 3.90 | 1.00 | 2.20 |
| LFeLi-1212M | 12.8 | 12 | 151.00 | 5.94 | 98.00 | 3.86 | 95.00 | 3.74 | 101.00 | 3.98 | 1.90 | 4.20 |
| LFeLi-1220M | 12.8 | 20 | 181.50 | 7.15 | 77.00 | 3.03 | 167.50 | 6.59 | 167.50 | 6.59 | 2.60 | 5.70 |
| LFeLi-1233M | 12.8 | 33 | 166.00 | 6.54 | 175.00 | 6.89 | 125.00 | 4.92 | 125.00 | 4.92 | 4.20 | 9.30 |
| LFeLi-1240M | 12.8 | 40 | 197.00 | 7.76 | 165.00 | 6.50 | 170.00 | 6.69 | 170.00 | 6.69 | 5.40 | 11.90 |
| LFeLi-1250M | 12.8 | 50 | 257.00 | 10.12 | 132.00 | 5.20 | 200.00 | 7.87 | 200.00 | 7.87 | 7.00 | 15.40 |
| LFeLi-1255M | 12.8 | 55 | 257.00 | 10.12 | 132.00 | 5.20 | 200.00 | 8.07 | 211.00 | 8.31 | 7.40 | 16.30 |
| LFeLi-1260M | 12.8 | 60 | 260.00 | 10.24 | 168.00 | 6.61 | 208.00 | 8.07 | 211.00 | 8.31 | 8.40 | 18.50 |
| LFeLi-1275M | 12.8 | 75 | 260.00 | 10.24 | 168.00 | 6.61 | 208.00 | 8.19 | 214.00 | 8.43 | 9.30 | 20.50 |
| LFeLi-12100M | 12.8 | 100 | 330.00 | 12.99 | 173.00 | 6.81 | 212.00 | 8.35 | 220.00 | 8.66 | 13.10 | 28.90 |
| LFeLi-12150M | 12.8 | 150 | 483.00 | 19.02 | 170.00 | 6.69 | 238.50 | 9.39 | 238.50 | 9.39 | 21.30 | 47.00 |
| LFeLi-12200M | 12.8 | 200 | 522.00 | 20.55 | 240.00 | 9.45 | 218.00 | 8.58 | 224.00 | 8.82 | 24.20 | 53.40 |

PERFORMANCE CHARACTERISTICS

Charging Characteristics (0.5C, 25°C)

Different DOD Discharge Cycle Life Curve (1C)

Different Rate Discharge Curve (25°C)

Different Temperature Discharge Curve (0.5C)

LEOCH EUROPE S.A.
EMEA Region Headquarters

5, Filikon Str.
121 31 Athens, GREECE
Tel.: (+30) 210 5760318
Email: info_EMEA@leoch.com

LEOCH BATTERY UK LTD.

Unit B5, Welland Business Park,
Market Harborough
Leicestershire, LE16 7PS, UNITED KINGDOM
Tel.: (+44) (0) 1858 433330

LEOCH FRANCE SAS

3, Rue du Clos Reine,
78410 Aubergenville FRANCE
Tel.: (+33) 1 30 90 24 82

LEOCH NORDEUROPA GmbH

Lindberghring 12,
33142 Büren, GERMANY
Tel.: (+49) 2955 7482888

LEOCH ITALIA srl.

Via Tortona 25
20144 Milano, ITALY
Tel. (+39) 375 5852025

LEOCH IBERIA S.L.

Camino de Pinares Llanos, 9
28670 Villaviciosa de Odón Madrid SPAIN
Tel.: (+34) 91 616 16 86



www.leoch.eu

FOLLOW US:

